

Parameters

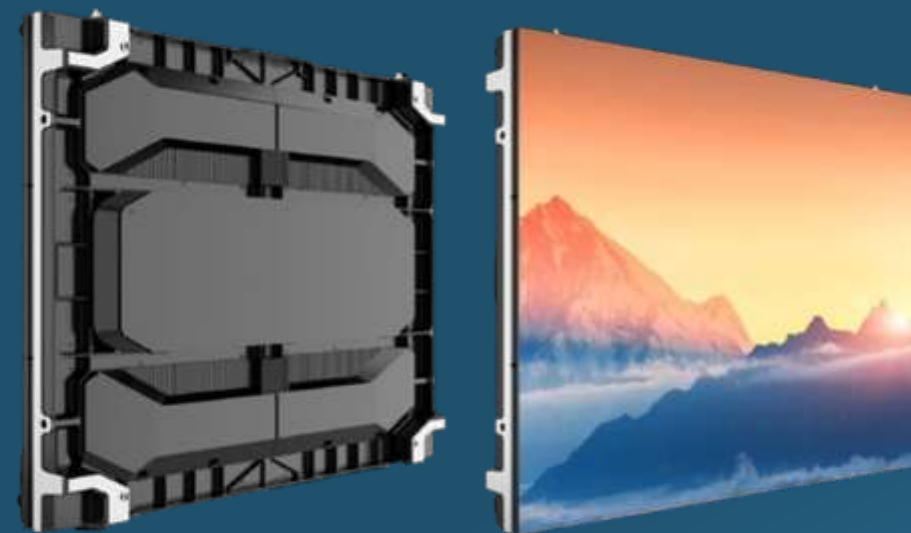
Parameters		CP1.2	CP1.5
Physical Parameter	LED type	Black SMD1010	Black SMD1212
	Pixel pitch(mm)	1.25	1.53
	Panel dimensions (W*H, mm)	640×480×61.5	640×480×61.5
	Panel resolution	512×384	416×312
	Pixel weight(kg)	7.7	7.7
	Module size (W*H, mm)	320×160	
Optoelectronic Parameter	Brightness (nit)	500	
	Refresh rate(Hz)	3840	
	Grayscale (bit)	14	
	Viewing angle (H/V, °)	150/130	160/140
	Power consumption (max./avg., W/m ²)	390/130	385/128
Application Parameter	Storage temperature (°C)	- 40~ + 60	
	Operating temperature (°C)	- 10~ + 40	
	Storage humidity (RH)	10 % ~85 %	
	Operating humidity (RH)	10 % ~80 %	
	IP rating	IP40/IP21	
	Certificate	FCC, ETL, CE, CCC, RoHS	

*Note: It is normal for the power consumption to fluctuate within ±15% due to the influence of the brightness of different batches of lamps. Please refer to the actual situation.

Shenzhen Kmttekled Photoelectricity Co.,Ltd. reserves the right to modify product design, specifications, and parameters without further notice. Photos are used for illustration purpose only as products may differ from these photos. All rights reserved by Shenzhen Kmttekled Photoelectricity Co.,Ltd

Shenzhen Kmttekled Photoelectricity Co.,Ltd

<http://www.kmttekled.com> Tel : 0755-27648736
4th Building, The 2nd Industry Park Of Nangang,
Songbai Rd 1026, Xili, Nanshan, Shenzhen, China



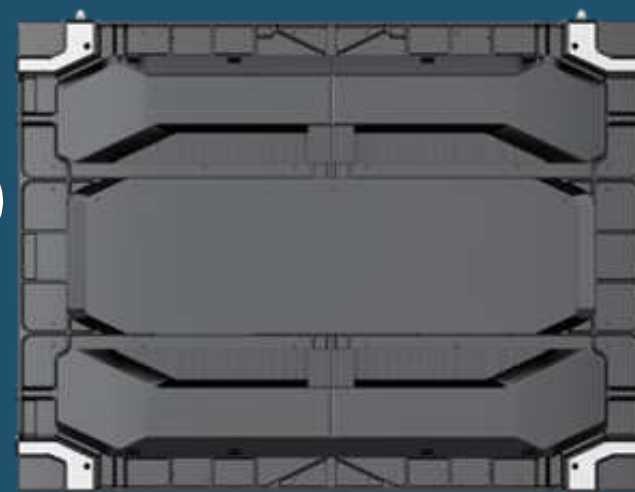
FI6 CP2 Series

CP1.2/CP1.5



F16 CP2 Series

CP1.2/CP1.5



Ready-to-use panel

Branded PSU and receiving card



Vivid performance

High refresh rate, high grayscale



Flexible splicing

Mixed splicing of standard and small panels



Easy maintenance

Full front & rear maintenance

Ready-to-Use LED

Superior Quality/ Worry-Free/ Safe & Secure

VS

On-Site Assembly LED

Inferior Quality/Troublesome/ Hidden Dangers

Superior Quality

- Excellent product design
- Reliable raw material
- Standard manufacturing process
- Quality control throughout the whole manufacturing process
- Extraordinary visual effect



Worry-Free

- Ready-to-Use Panel
- Quick Installation
- One-Stop Standard Solution
- Global Service and Long Term Warranty



Safe & Secure

- Safe and Trustworthy
- Certification
- Professional Installation & Maintenance Services



Inferior Quality

- Crude product design
- Poor raw material
- Non-Standard manufacturing process
- No strict quality control
- Terrible visual effect



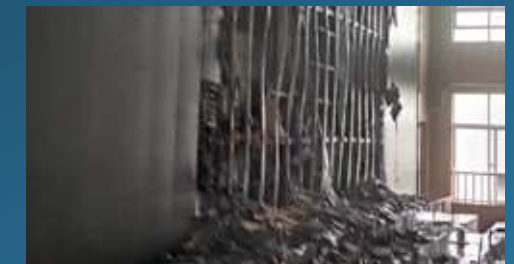
Troublesome

- On-Site Assembly
- Complicated Installation
- Non-Standard Solution
- Unreliable After-Sales Service



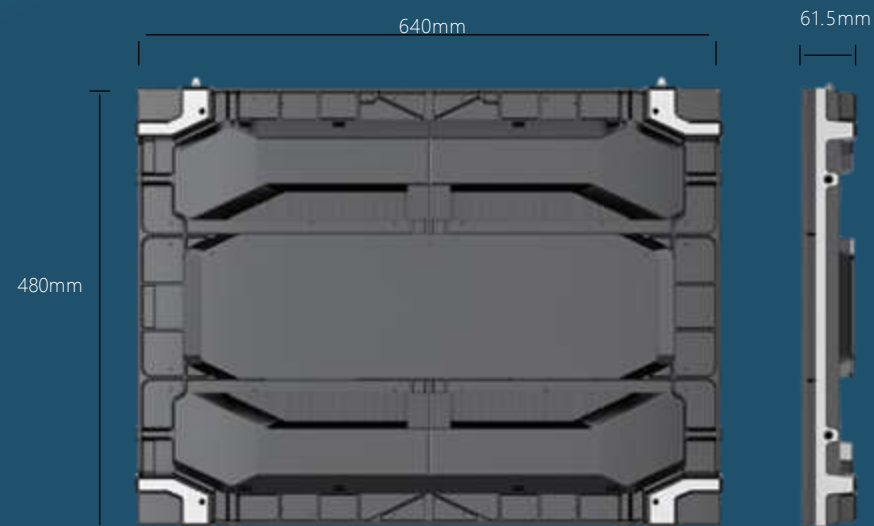
Hidden Dangers

- Great Security Risks
- No Certification
- Non-Standard Installation & Maintenance Services



Ready-to-use panel with superior quality

Precision die-casting aluminum cabinet achieves ultra-high brightness through CNC precision machining.
Rodent-proof and dust-proof panel with closed design.
Guaranteed quality product with all accessories are directly supplied by the original factory.



Branded PSU



Branded receiving card



Precision die-cast aluminum cabinet

High brightness and stunning vividness

Adopt PWM LED driver IC to improve display performance; No scanning lines on the camera's display with a refresh rate of 3840 Hz;
Supporting high grayscale display at low brightness for true-to-nature colors.



3840 high refresh rate
(Pictures taken without scanning lines)



High grayscale
(Clear details)



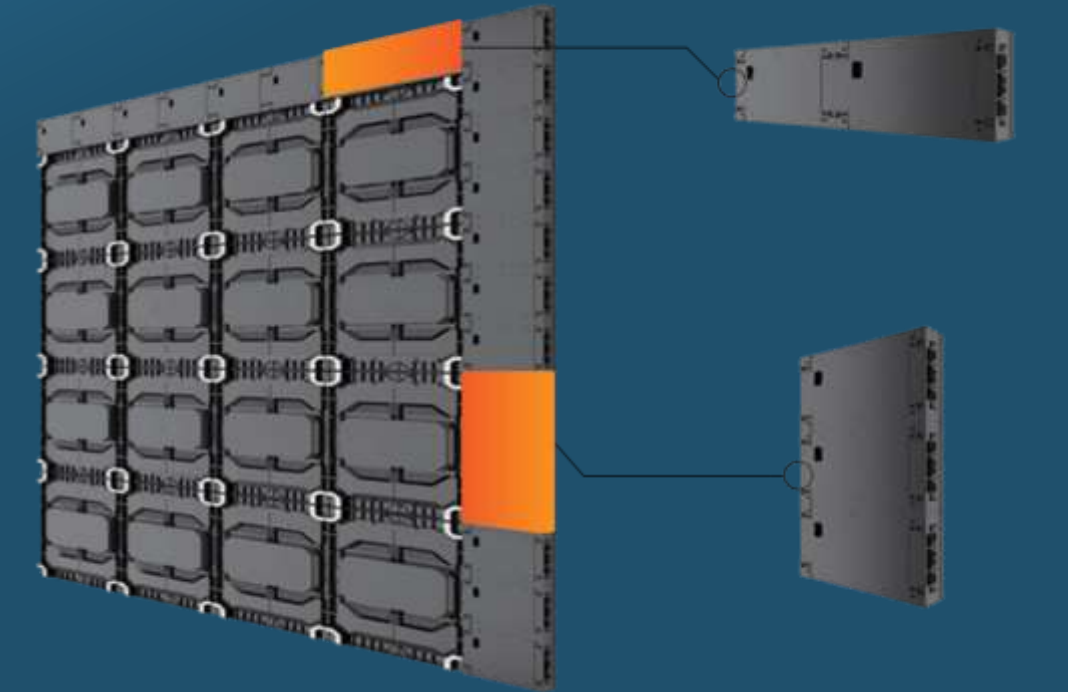
Low refresh rate
(Pictures taken with scanning lines)



Low grayscale
(Missing details)

Small panel for flexible splicing

Optional 320*160mm panel can meet the needs for any sizes, splicing with the standard 640*480mm panel. The small panel is designed with high-strength alloy material.

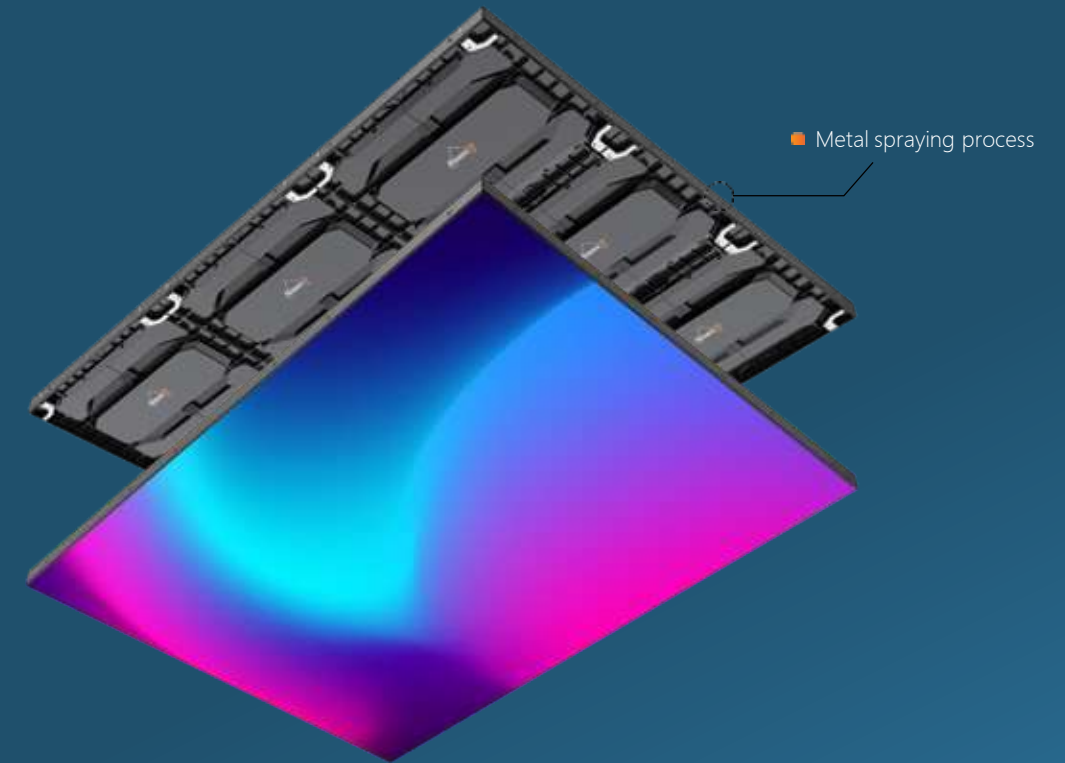


■ Splicing of standard panels and small panels

■ Diversified splicing of small panels

Ultra-thin trim pieces

Ultra-thin trim pieces solutions offer customers with high quality, time-saving services*.



■ Metal spraying process

*Ultra-thin trim pieces solutions are optional

Stacking installation

Standard stacking solution with square steel structure for fast installation of LED wall.



■ Installation with steel structure

Wall-mounting installation

Wall-mounting solution fully saves installation space with no need for special maintenance access.



■ Wall mount

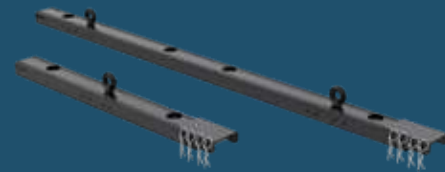
■ Wall-mounted installation

Hanging installation

Hanging installation solution is available to meet the needs of different environments.



Recommended hanging LED display height:
6m or less, to ensure safety and visual effect



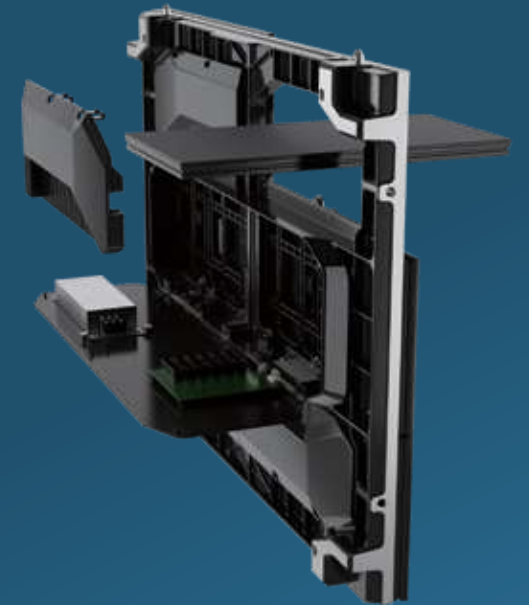
■ 1x/2x hanging bars are available

Full front and rear maintenance

Full front and rear maintenance of modules, PSU, and receiving card for optimal convenience.

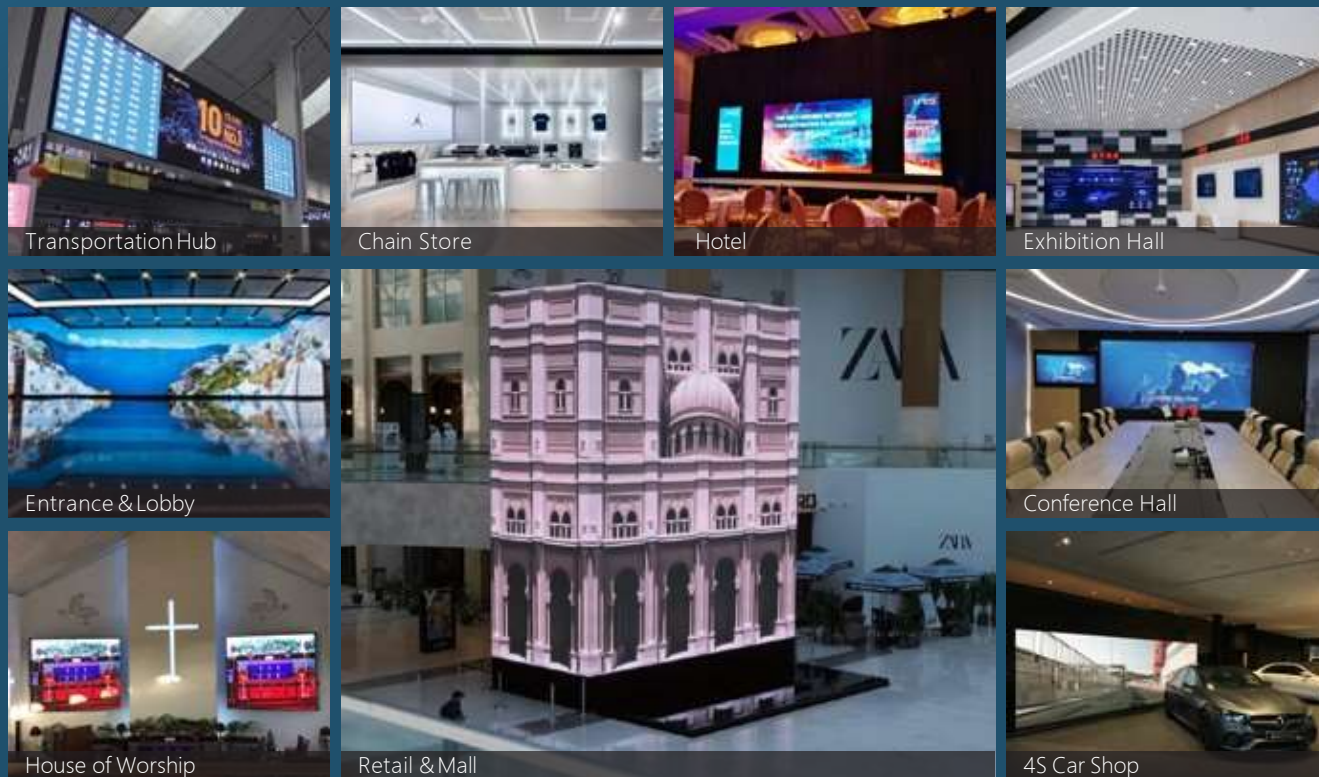


■ Front maintenance



■ Rear maintenance

For Main Application Scenarios Of Commercial Display



And More Application Scenarios

Safe and Stable

Standard manufacturing process and a number of quality tests ensure safe operation of CP series



Reliable raw material

High quality LED lamp , power box and other accessories



Standard manufacturing process

Adhere to standard manufacturing process to ensure product quality



Quality control throughout the whole manufacturing process

18 monitoring links
29 operation processes
33 recording links
2285 inspections and tests



Certifications

China Compulsory Certification
Energy Conservation Certification
Pass performance/ blue light hazard/ photobiology test, etc.



Long service life

Pursue precision and high quality
Energy efficiency, long service life



Save operating cost

Stable product quality
Low operational risks
Low operating and maintenance costs

Professional service, best experience

Kmtekled has built up a global network , able to provide prompt and professional local services.

Kmtekled service ability

Comprehensive support

Enjoy 1-year warranty, support up to 1-year extended warranty, lifetime maintenance, and enjoy 10+ items of professional service solutions to help you solve problems

Global coverage

400+ Kmtekled certified partners, 3000+ Kmtekled certified engineers, covering most of the global market, the global service network is continuing to expand vigorously

Multiple service channels

Providing service via multiple channels such as Hot line, WeChat, WhatsApp, E-mail and official website to quickly take care of service requirements

24/7 response

24/7/365 available, quick response in 10 seconds

One-stop service

Enjoy exclusive and professional service in the whole process of pre-sales, sales and after-sales

Kmtekled service philosophy

Initiative

Proactive care and return visits, regular touring inspection services for customers

Efficiency

Kmtekled customer service center responds within 10 seconds, intelligently match the best local service resources, and enjoy a fast service experience

Standardization

Comprehensive service engineer training system, ACE professional training and certification, ACP professional certification; establishing customer's product files and record the entire service process

Thoughtfulness

Longer warranty, worry-free quality

Service time (GMT+8)

8:30~24:00 : Staff service

00:00~8:30 : Intelligent system service

